

Stormy Morning Shawl

Designed By Mysticklobo

Supplies:

Chunky to Bulky weight yarn

Size 13 needles

Cast-on 11 stitches.

Row 1: K4, pm, yo, k1, yo, k1, yo, k1, yo, k4.

Row 2 and all wrong side rows: K

Row 3: K4, yo, k3, yo, k1, yo, k3, yo, k4.

Row 5: K4, yo, k5, yo, k1, yo, k5, yo, k4.

Row 7: K4, yo, k7, yo, k1, yo, k7, yo, k4.

Row 9: K4, yo, k9, yo, k1, yo, k9, yo, k4.

Row 11: K4, yo, k11, yo, k1, yo, k11, yo, k4.

Row 13: K4, yo, k13, yo, k1, yo, k13, yo, k4.

Row 15: K4, yo, k15, yo, k1, yo, k15, yo, k4.

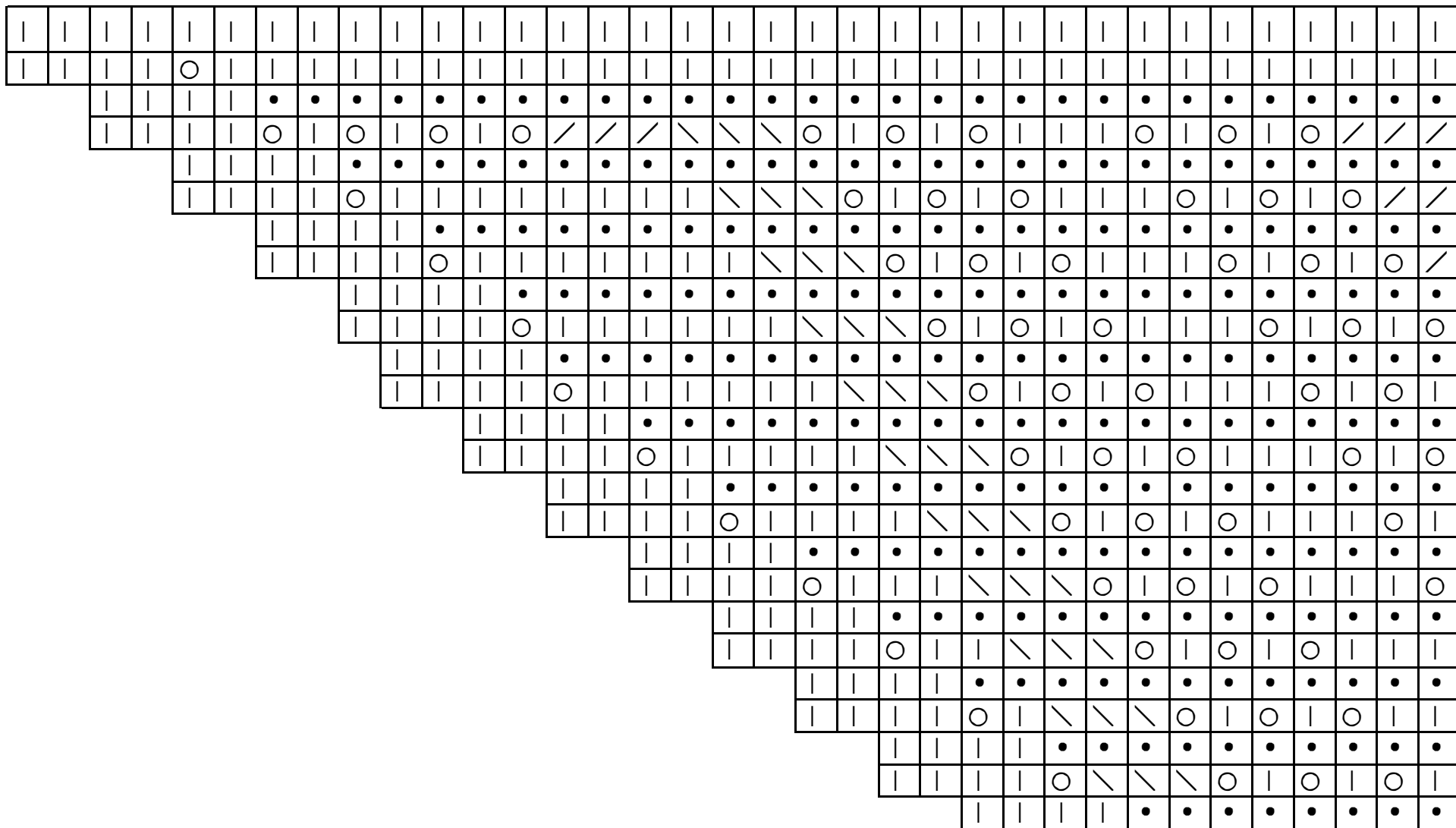
Continue in this manner until you have 23 stitches, plus 2 yo's between the markers, then: k4, yo, k51, yo, k4.

Go back to the original k4, yo, k to marker, yo, k1, yo, k to marker, yo, k4, until you have 74 stitches. Then start charts.

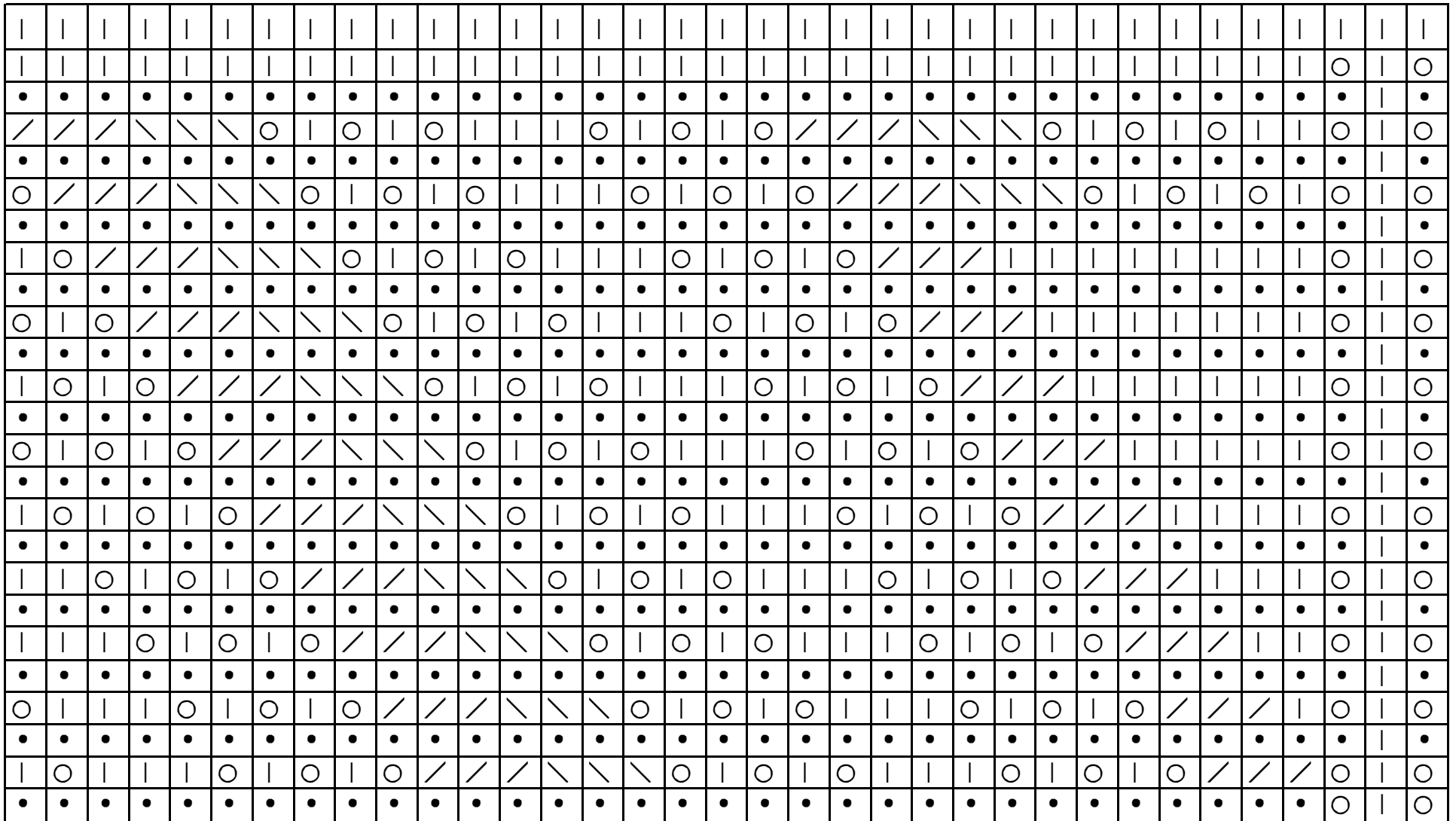


	knit
•	purl
○	yarn over
\	k2tog
/	skpssso

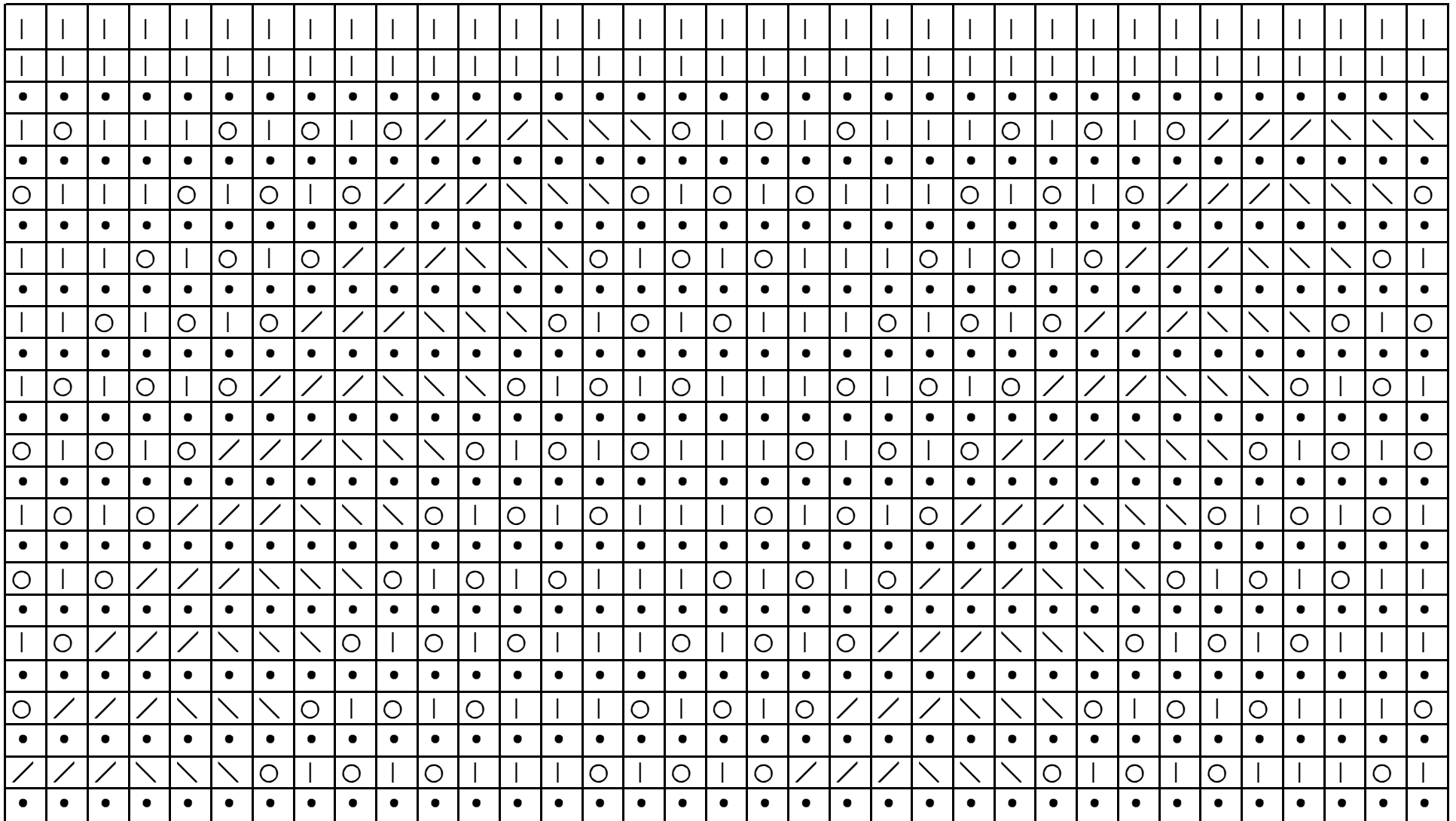
Stormy Morning Shawl



Stormy Morning Shawl



Stormy Morning Shawl



Stormy Morning Shawl

